

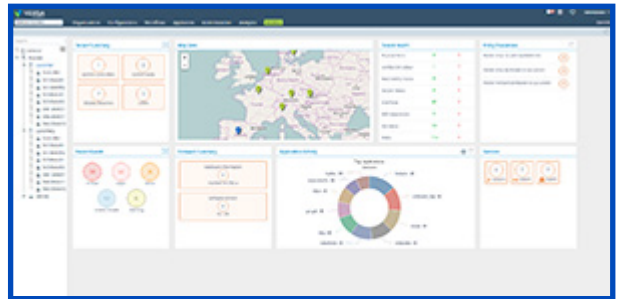
# DIRECTOR



## CONFIGURATION AND PROVISIONING PORTAL

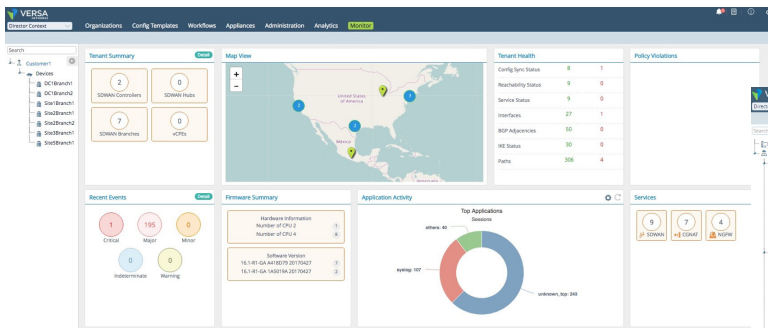
### PRODUCT DESCRIPTION

Versa Director is Versa Networks’ virtualization and service creation platform that simplifies the creation, automation and delivery of services using Versa FlexVNF. Versa Director provides the essential management, monitoring and orchestration capabilities needed to deliver Versa’s VNF-based network and security services. Services supported by Versa include routing and connectivity to direct Internet access and control and SD-WAN with layered advanced security.

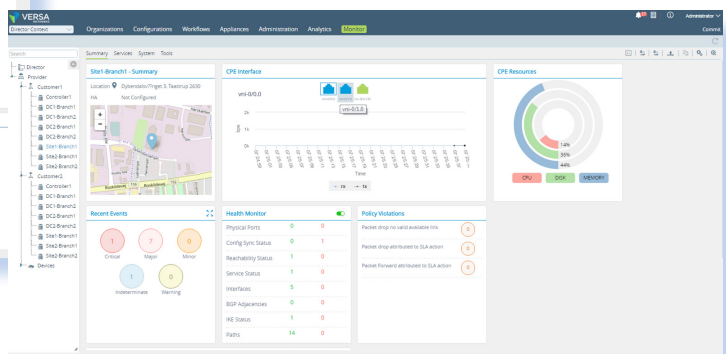


Versa Director provides single-pane-of-glass management for connectivity and services. It scales to thousands of end customers or organizations through hierarchical multi-tenancy and role-based administrative capabilities. Combined with Versa FlexVNF software, Versa Director provides complete VNF infrastructure lifecycle management for bare metal and virtual machine environments, from deployment and configuration to ongoing monitoring and change management of Versa and third party VNF-based services with automatic actions such as auto-healing and auto-scaling.

Versa Director also provides a rich set of interfaces for effective integration with third party products. Versa Director supports service definitions including Versa and third party service components, enabling flexible service chain creation and deployment. In addition, utilizing open and widely available protocol and API formats allows for tight integration with operations and business systems. The result is rapid delivery and simplified ongoing management of Versa-based services, from basic connectivity to advanced SD-WAN and branch security



Versa Director Tenant Level monitoring Dashboard



Versa Director SD-WAN Appliance Level Monitoring Dashboard



## FEATURE SUPPORT DETAILS

Policy	<ul style="list-style-type: none"> <li>Centralized policy management – policy locking, versioning</li> <li>CRUD operations on users, roles, capabilities</li> <li>VNF placement support using resource pools</li> </ul>
Operations	<ul style="list-style-type: none"> <li>VNF life cycle management</li> <li>Template based provisioning</li> <li>FlexVNF configuration management, backup, restore, archive, rollback</li> <li>Hierarchical multi-tenancy support and tenant management</li> <li>Service catalogs, subscription plans for tenants – specify flavors, policies</li> <li>Service orchestration</li> <li>RestAPIs for all operations</li> <li>FlexVNF management using industry standard NetConf (RFC 6241)</li> <li>Web-based graphical user interface (GUI)</li> </ul>
Administration	<ul style="list-style-type: none"> <li>Inventory management</li> <li>Software management/upgrades</li> <li>Client and secure API management for third party integration</li> <li>User Management and AAA integration – Radius/LDAP/TACACS+</li> <li>Role-based access control</li> <li>High availability and disaster recovery</li> <li>Configuration audit logs</li> <li>Licensing and usage reporting</li> <li>SSO (Single-Sign-On) support via SAML</li> <li>Licensing and Entitlement management</li> </ul>
Monitoring	<ul style="list-style-type: none"> <li>FlexVNF monitoring – System, Cluster, Interface, Alarms</li> <li>Service monitoring – SNMP MIBs, counters, statistics</li> <li>Auto healing</li> <li>AMQP based notifications</li> </ul>
Elasticity Support	<ul style="list-style-type: none"> <li>Policy based auto and administrative scale-out/scale-in of FlexVNFs</li> </ul>
Service Chaining Support	<ul style="list-style-type: none"> <li>Service chaining FlexVNFs and third party VNFs</li> </ul>
Deployment Options	<ul style="list-style-type: none"> <li>Whitebox</li> <li>Baremetal</li> <li>Virtual machine</li> <li>Containers</li> </ul>
Cloud Management Systems	<ul style="list-style-type: none"> <li>VMware vCloud Director, vCenter</li> <li>OpenStack, VMware Integrated OpenStack</li> <li>Bare Metal services with Local Cloud abstraction</li> </ul>
Third Party Overlay Integration	<ul style="list-style-type: none"> <li>VMware NSX, Nokia Nuage, Open Contrail, OpenDaylight (ODL)</li> </ul>
OSS/BSS & Orchestration Integration	<ul style="list-style-type: none"> <li>Ciena BluePlanet, Ubiquite, Cisco NSO, Ericsson ECM, Alcatel Cloudband, NEC NetCracker</li> </ul>